


# **IST-I600 Installation Manual**

Thank you for purchasing an Intrasonic Technology product. Our products are built to provide you with years of high quality sound.



If you need assistance with the installation or operation of this product, please contact our Customer Service Support team at 1-877-435-0670. You may also get information on this and other Intrasonic Technology products on our website at [www.intrasonictechnology.com](http://www.intrasonictechnology.com)

## Important Safety Instructions

1. Read these Instructions.
2. Keep these Instructions.
3. Heed all Warnings.
4. Follow all instructions.
5. Do not use this apparatus near water.
6. Clean only with a dry cloth.
7. Do not block any ventilation openings. Install in accordance with the manufacturer's instructions.
8. Do not install near any heat sources such as radiators, heat registers, stoves, or other apparatus (including amplifiers) that produce heat.
9. Do not defeat the safety purpose of the polarized or grounding - type plug. A polarized plug has two blades with one wider than the other. A grounding type plug has two blades and a third grounding prong. The wide blade or the third prong are provided for your safety. When the provided plug does not fit into your outlet, consult an electrician for replacement of the obsolete outlet.
10. Protect the power cord from being walked on or pinched particularly at plugs, convenience receptacles, and the point where they exit from the apparatus.
11. Only use attachments/accessories specified by the manufacturer.
13. Unplug this apparatus during lightning storms or when unused for long periods of time.
14. Refer all servicing to qualified service personnel. Servicing is required when the apparatus has been damaged in any way, such as power-supply cord or plug is damaged, liquid has been spilled or objects have fallen into the apparatus, the apparatus has been exposed to rain or moisture, does not operate normally, or has been dropped.
15. To reduce the risk of fire or electric shock, do not expose this apparatus to rain or moisture. The apparatus shall not be exposed to dripping or splashing and that objects filled with liquids, such as vases, shall not be placed on apparatus.
16. The mains plug /appliance coupler is used as disconnect device, the disconnect device shall remain readily operable.
17.  Protective earthing terminal. The apparatus should be connected to a mains socket outlet with a protective earthing connection.
18. The battery (battery or batteries or battery pack) shall not be exposed to excessive heat such as sunshine, fire or the like.



19.
  - This lightning flash with arrowhead symbol within an equilateral triangle is intended to alert the user to the presence of non-insulated "dangerous voltage" within the product's enclosure that may be of sufficient magnitude to constitute a risk of electric shock.
  - Warning: To reduce the risk of electric shock, do not remove cover (or back) as there are no user-serviceable parts inside. Refer servicing to qualified personnel.
  - The exclamation point within an equilateral triangle is intended to alert the user to the presence of important operating and maintenance instructions in the literature accompanying the appliance.

## FCC STATEMENT

1. This device complies with Part 15 of the FCC Rules. Operation is subject to the following two conditions:
  - (1) This device may not cause harmful interference.
  - (2) This device must accept any interference received, including interference that may cause undesired operation.
2. Changes or modifications not expressly approved by the party responsible for compliance could void the user's authority to operate the equipment.

NOTE: This equipment has been tested and found to comply with the limits for a Class B digital device, pursuant to Part 15 of the FCC Rules. These limits are designed to provide reasonable protection against harmful interference in a residential installation. This equipment generates uses and can radiate radio frequency energy and, if not installed and used in accordance with the instructions, may cause harmful interference to radio communications. However, there is no guarantee that interference will not occur in a particular installation. If this equipment does cause harmful interference to radio or television reception, which can be determined by turning the equipment off and on, the user is encouraged to try to correct the interference by one or more of the following measures:

- Reorient or relocate the receiving antenna.
- Increase the separation between the equipment and receiver.
- Connect the equipment into an outlet on a circuit different from that to which the receiver is connected.
- Consult the dealer or an experienced radio/TV technician for help.

## FCC Radiation Exposure Statement

This equipment complies with FCC radiation exposure limits set forth for an uncontrolled environment. This equipment should be installed and operated with minimum distance 20cm.

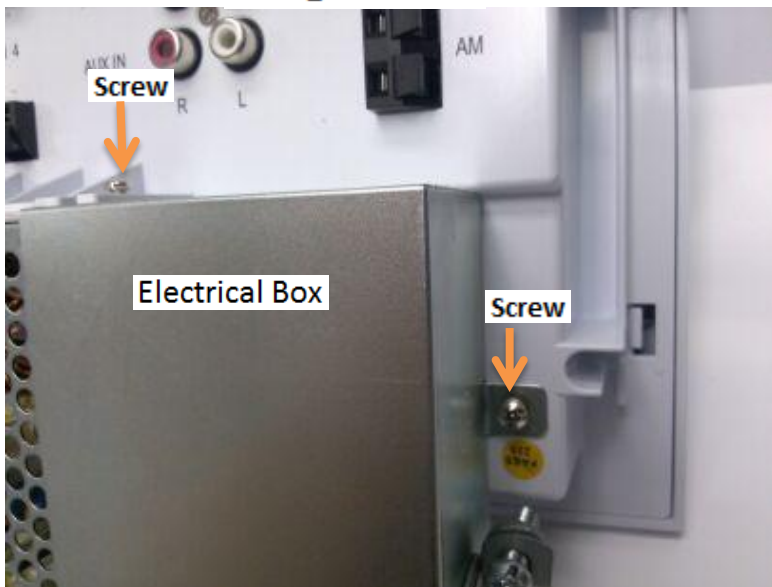
# Table of Contents

- 1.** Cover Page
- 2.** Safety Instructions
- 3.** Table of Contents
- 4.** Connecting Power
- 5.** Connecting the Antenna
- 6.** Connecting Speakers without Volume Controls  
Volume is controlled from the I600 system
- 7.** Connecting Additional Amplifiers (Optional)
- 8.** Connecting Volume Controls (Optional)
- 9.** Connecting an External Auxiliary Wall Plate  
Used for CD Players, Satellite etc... (Optional)
- 10.** Installing the I600 into the wall

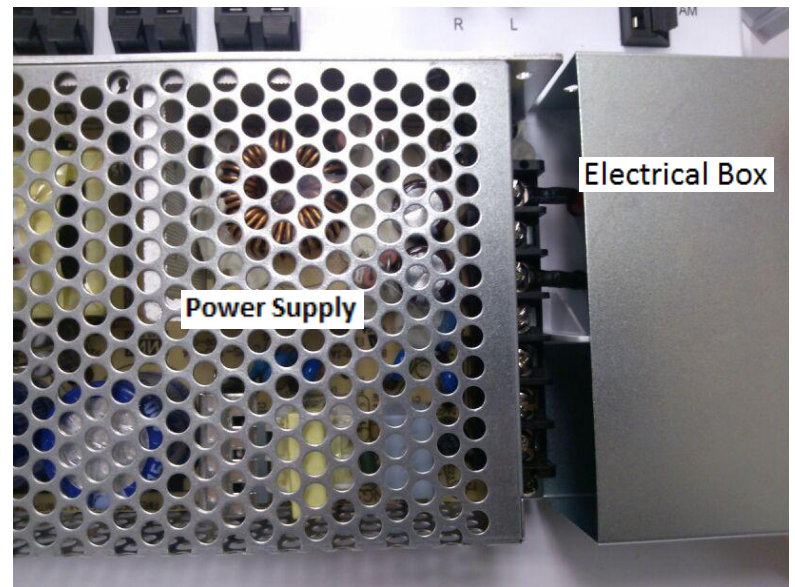
# Connecting the Power

1. Once a location has been selected for the I600 unit, use the provided template to cut a hole in the wall. Should be approximately 50" above the floor. (5 1/2" Tall and 10" Wide).
2. Run a dedicated power to the location of I600 unit. The power supply on the I600 unit can automatically detect the voltage applied directly to the unit. This means 110V or 220V can be used to power the system.
3. Once you are ready to apply power to the I600 unit, remove the screws that secure the electrical box to the I600 unit. Refer to "Diagram 1"
4. Slide the electrical box shown on Diagram 2 and Diagram 3 so the power connections are exposed.
5. Feed the power through the Romex clamp on the electrical box show on Diagram 4
6. Attach the power to the bottom three screws of the power supply show on Diagram 4.
7. Use the Romex clamp to secure the power in place.
8. Slide the electrical box back onto the power supply and line up the holes. Use the screws to secure the electrical box back in place. Refer to Diagram 1.

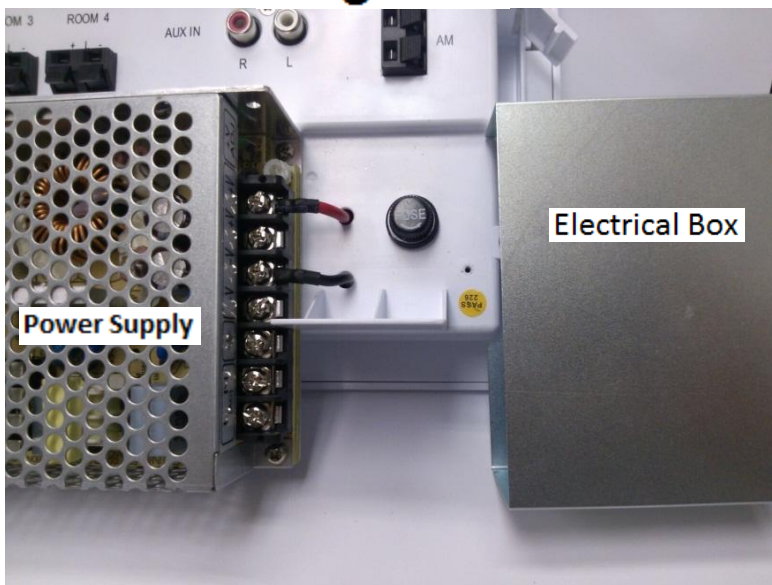
**Diagram 1**



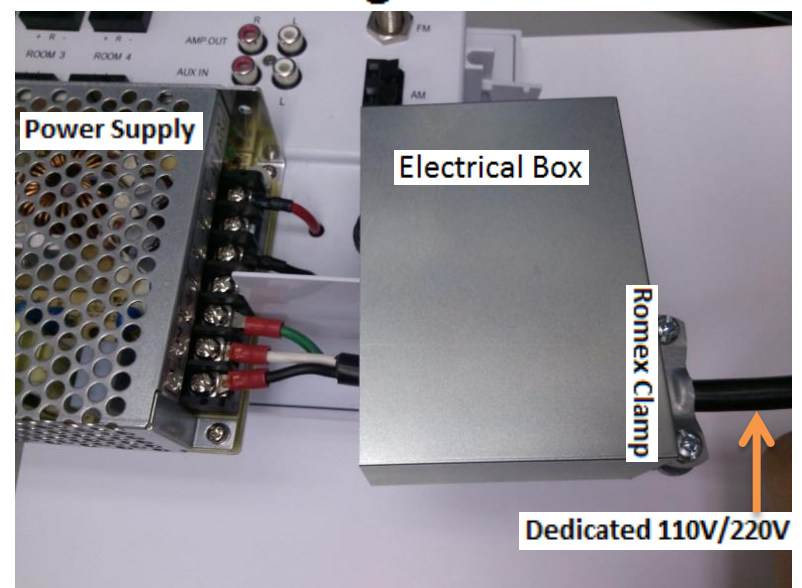
**Diagram 2**



**Diagram 3**



**Diagram 4**



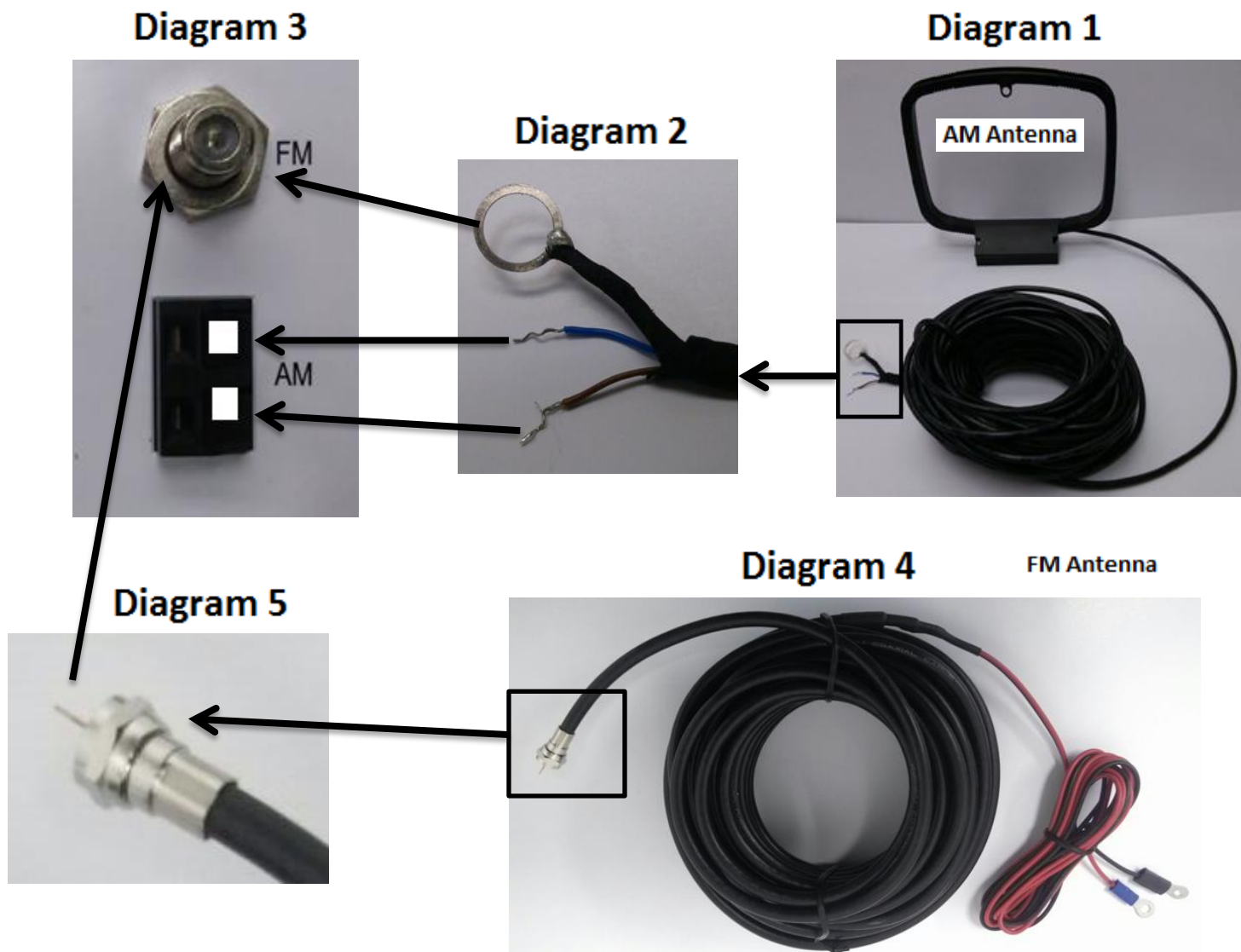


# Connecting the Antenna

1. The AM and FM antennas needs be located in the attic or highest point in the house. Make sure to secure the antennas.
2. Keep the AM and FM antennas away from high voltage.
3. The RG59 connector on the FM Antenna connects to the I600 system and the RED and BLUE end is left in the Attic or the highest point in the house. Spread the RED and BLUE ends as far apart as they can go and secure.
4. The LOOP on the AM Antenna stays in the Attic or Highest Point in the house while the BLUE and BLACK ends are connected to the I600 System.
5. The BLUE and BLACK leads on the AM Antenna needs to be connected to the I600 System before the FM Antenna. Refer to Diagram 1, 2 and 3.
6. Connect FM Antenna to the I600 by using the RG59 Connector. Refer to Diagram3, 4 and 5.

## Testing the radio reception

1. Turn on the radio of the I600 and test both the AM and FM reception.
2. In some cases adjustments to the location of the antennas by moving the ends around located in the attic or the highest point in the house for the best reception.



# Connecting Speakers to I600 or I600-AMP

1. Once the location of the speakers have been selected, run 2 pairs of 16 gauge 2 conductor speaker wire from each pair of speakers (Maximum of 4 pairs) to the I600 system. Only 8-Ohm speakers (**Suggested Speakers are 100C or EX-C80II**) are to be used with the I600 System. If connecting more than 4 pairs of speakers to the I600 System refer to Connecting Additional Amplifiers on Page 7.
2. Maximum distance of 150 feet from **I600** or **I600-AMP** to any pairs of speakers.
3. Proper separation of speakers in a room should be 6 to 10 Feet apart.
4. Make sure to label the wire “Left” and “Right” and location for example “Room 1 Master Bedroom”. This will limit installation errors and help Identify locations during installation of the system.
5. The I600 will control the volume to every room. To control the volume separately a volume control will need to be installed in each room (Suggest to use **JA-VNB-75** or **JA-VSL-100**). Refer to connecting volume controls on Page 8.

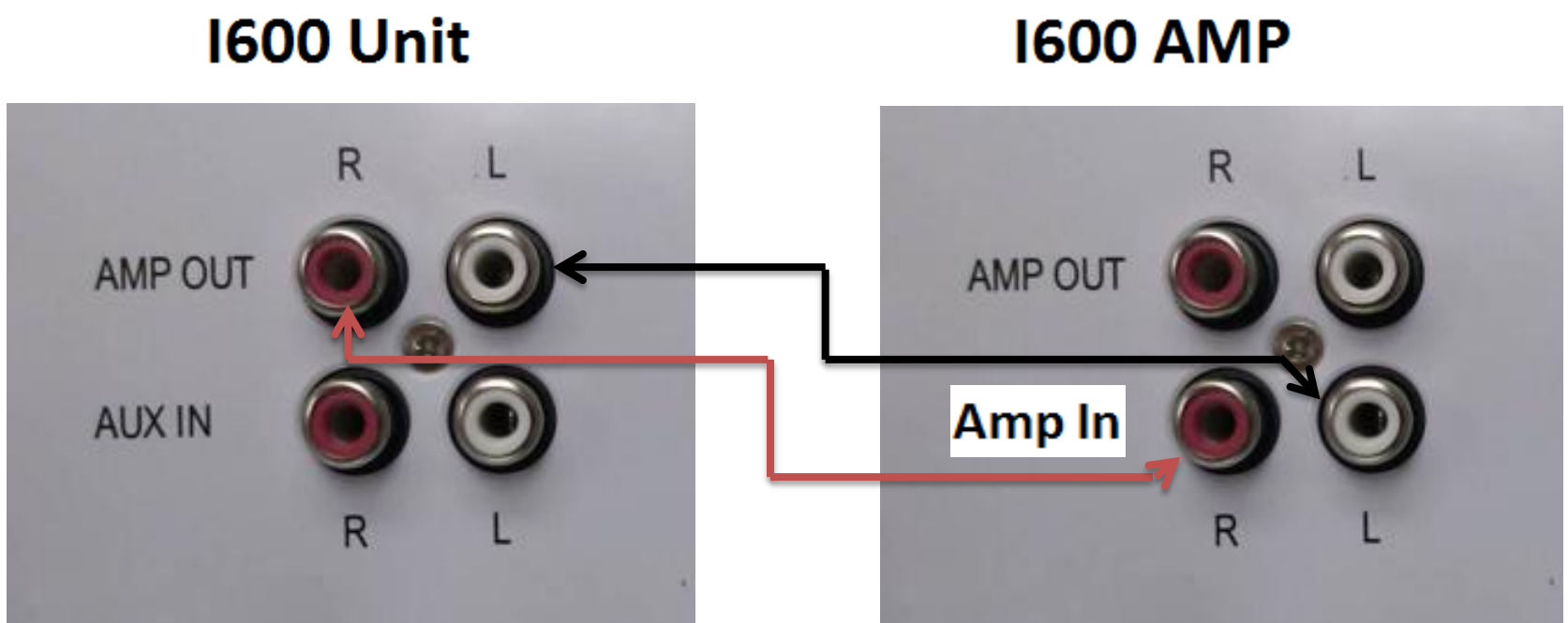
**Note:** The picture is a representation of the speaker connections on the I600 and I600-AMP



# Connecting Additional Amplifiers (I600-AMP OPTIONAL)

Note: Unlimited number of **I600-AMP** Amplifiers can be installed per system. Maximum 4 pairs of speakers per **I600-AMP** Amplifier can be connected.

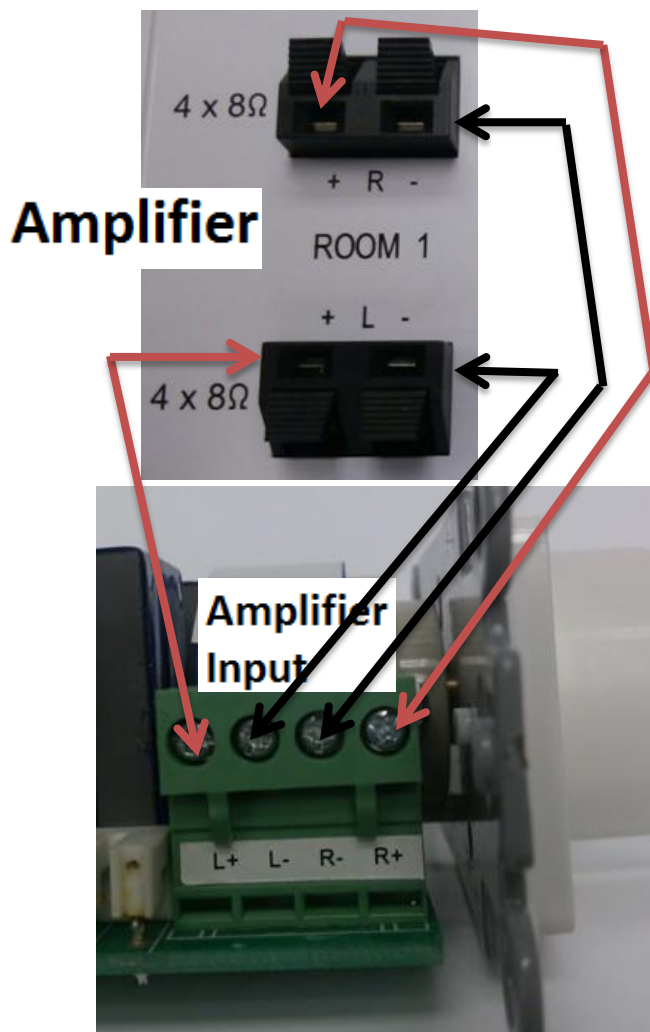
1. The **I600-AMP** is usually located in a closet or in a location out of sight. Use 22 AWG 75 Ohm Coaxial Cable (RG59) RCA Connectors. The maximum distance the **I600-AMP** can be located from the I600 System is **150 feet**. Make sure to mount the **I600-AMP** within 6 feet to a standard 110V outlet.
2. At this time surface mount the **I600-AMP** to the wall. Make sure the **I600-AMP** is mounted securely to the wall by using (Screws Not Included).
3. Run RCA Audio Cables with RCA Male ends from the I600 System using the **AMP OUT** to the **I600-AMP** connecting to the **AMP IN**. Refer to the **Diagram Below**.
4. When connecting more than one amplifier to a I600 System, run RCA Audio Cables with RCA male ends from **I600-AMP** to the next **I600-AMP** by using the **AMP OUT** and **AMP IN**. Refer to **Diagram Below**.
5. Refer to Page 6 Connecting Speakers to the **I600-AMP**.



# Connecting Volume Controls (Optional)

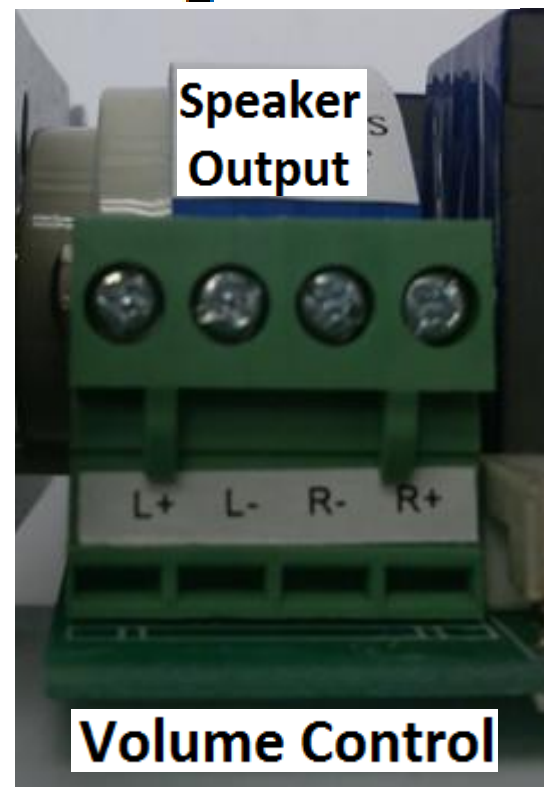
1. Volume controls are only needed when the desire to control the volume in individual rooms. Without volume controls the I600 Main System will be controlling the volume for the entire system.
2. Once the location of the volume controls have been selected, run 2 pairs of 18 gauge 2 conductor speaker wire from the **I600 System** or **I600-AMP** to the Volume Control (**Suggested Volume Controls are JA-VNB-75 or JA-VSL-100**) then from the volume control to each pair of speakers (Maximum of 4 pairs) to the **I600 system** or **I600-AMP**. Only 8-Ohm speakers (**Suggested Speakers are 100C or EX-C80II**) are to be used with the **I600 System**. If connecting more than 4 pairs of speakers to the I600 System refer to Connecting Additional Amplifiers on Page 7.
3. When Connecting the Volume Controls (**Suggested Volume Controls are JA-VNB-75 or JA-VSL-100**) to the **I600** or **I600-AMP** connect the L+ on the **I600** or **I600-AMP** to the L+ to the volume control amplifier input terminal. Continue matching the wires to the correct terminals, refer to Diagram 1 below. Refer to the Volume Control Instructions for setting the dip Switches. Only one pair of 8-Ohm Speakers (**Suggested Speakers are 100C or EX-C80II**) per volume control.
4. Label each pair of speakers “Left” and “Right” and connect each speaker to the proper Speaker Output terminal. (Example: Speaker one left + wire will terminate up to the volume control where it says speaker output L+ and Speaker one left - wire will terminate to the volume control where it says speaker output L-.) Diagram 2 below.

## Diagram 1



**Volume Control**

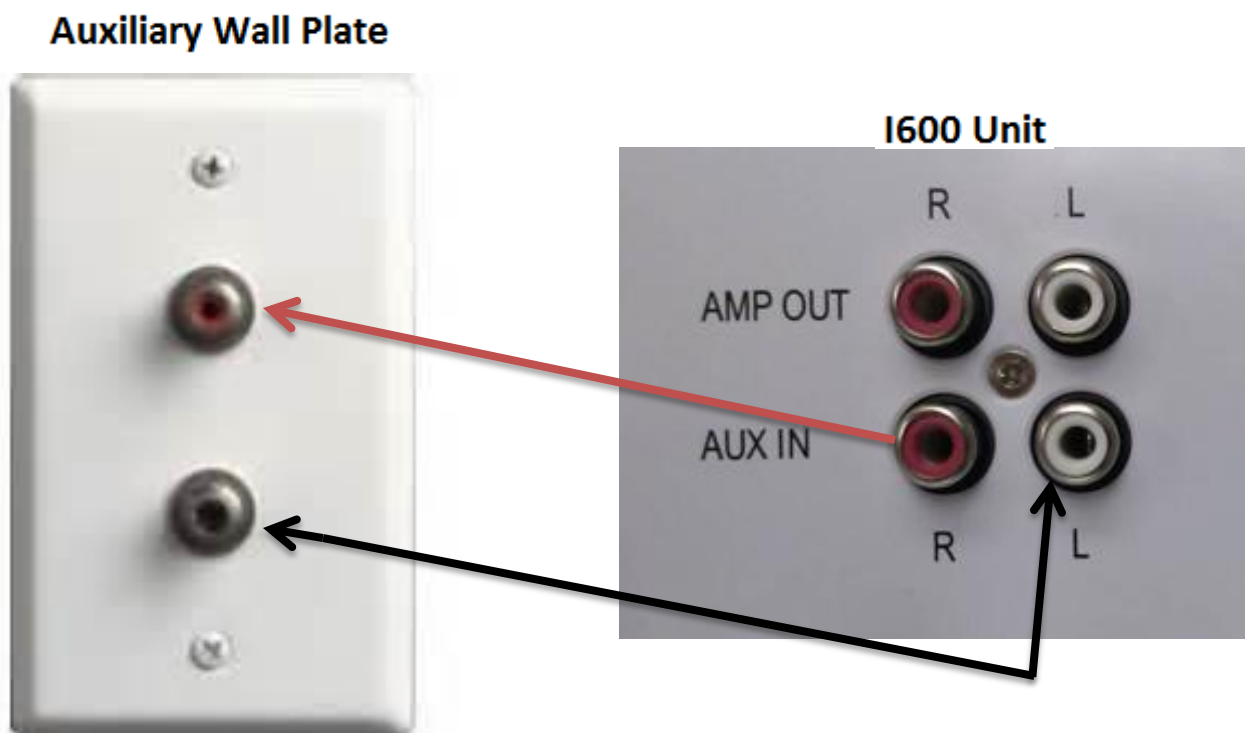
## Diagram 2





# Connecting an Auxiliary Wall Plate (Optional)

1. An Auxiliary Wall Plate is used when connecting external sources such as CD Players, Satellite etc...
2. Once you have chosen the location of the Auxiliary Wall Plate, run a RCA Audio Cable from the I600 System to the Auxiliary Wall Plate. Note: (Wall Plate not Included can be purchased at most electronic stores).
3. Once a location has been selected for the Auxiliary wall plate, run a RCA Audio cable with RCA male ends from the I600 Unit using the **AUX IN** to the Auxiliary wall plate. Maximum distance is 150 Feet with a Shielded RG6 Audio Cable. Refer to the **DIAGRAM below**.



## Installing the I600 into the Wall

1. Remove the front cover of the I600 to expose the (4) screws. Diagram 1 points to the 4 screws.
2. Insert the I600 into the wall; use a Phillips screw driver to tighten the CAMLOCKS. Notice the CAMLOCKS will compress against the wall as you tighten the screws. It is VERY IMPORTANT not to over tighten the screws. Over tightening the screws will result in damaging the CAMLOCKS. Diagram 2 points to the CAMLOCKS.
3. After securing the I600 into the wall, snap the faceplate onto the I600.

**Diagram 1**



**Diagram 2**

